

Boost[®] Hybrid Roof

GENERAL INFORMATION

BOOST[®] HYBRID ROOF is a breathable roof underlay with built-in thermal performance. **BOOST[®] HYBRID ROOF** is generally used for roof applications and is usually installed over timber rafters.

BOOST[®] HYBRID ROOF must be installed with the perforated copper-coloured film facing downwards and the black watertight breather membrane facing upwards.

BOOST[®] HYBRID ROOF is laid over rafters (or directly onto boarding) and fixed using corrosion-resistant staples or clout head nails. In the case of installation on a metal frame, double-sided tape is recommended.

Horizontal joints are to be sealed using the built-in self-adhesive laps formed from the top layer of **BOOST[®] HYBRID ROOF**. Vertical joints should be lapped by 50mm-100mm and sealed with ACTIS Multidhesif tape which is recommended for the product.

In order to prevent pooling, it is recommended that **BOOST[®] HYBRID ROOF** is installed pulled taut and with counter-battens. This will guarantee a clear water drainage path.

BOOST[®] HYBRID ROOF can be combined with other ACTIS Hybrid products or with traditional insulation products. It can be in direct contact with building components but the thermal efficiency will be improved with air gaps associated with the product. For optimal thermal efficiency the air gap on the warm side (below) should be at least 13mm.



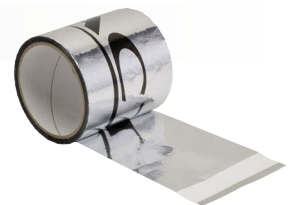
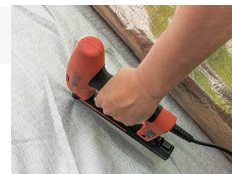
It is good practise to install an independent and continuous vapour control layer on the warm side of construction build-ups.

BOOST[®] HYBRID ROOF is suitable for all wind zones (1-5) throughout the UK in accordance with BS 5534.

BOOST[®] HYBRID ROOF is available in 1.5m x10m rolls, which cover an area of 15.00m².

TOOLS / ACCESSORIES

Cutter, stapler, tape.



PRECAUTIONS

- **BOOST[®] HYBRID ROOF** is a breather membrane and therefore not intended to be used alone without weather protection, e.g. roof tiles, over a prolonged period of time.
- **BOOST[®] HYBRID ROOF** must not be in contact with a chimney, fire or any source of ignition. The product must be isolated from a chimney with a fire resistant material. Use suitable flashing.
- The installation of **BOOST[®] HYBRID ROOF** must not be continued over the junctions of compartment walls or floors.
- **BOOST[®] HYBRID ROOF** is a non-load bearing product. It will resist normal loads associated with installation and use, although cannot be walked on.

BOOST[®] HYBRID ROOF STEP BY STEP INSTALLATION

PITCHED ROOF

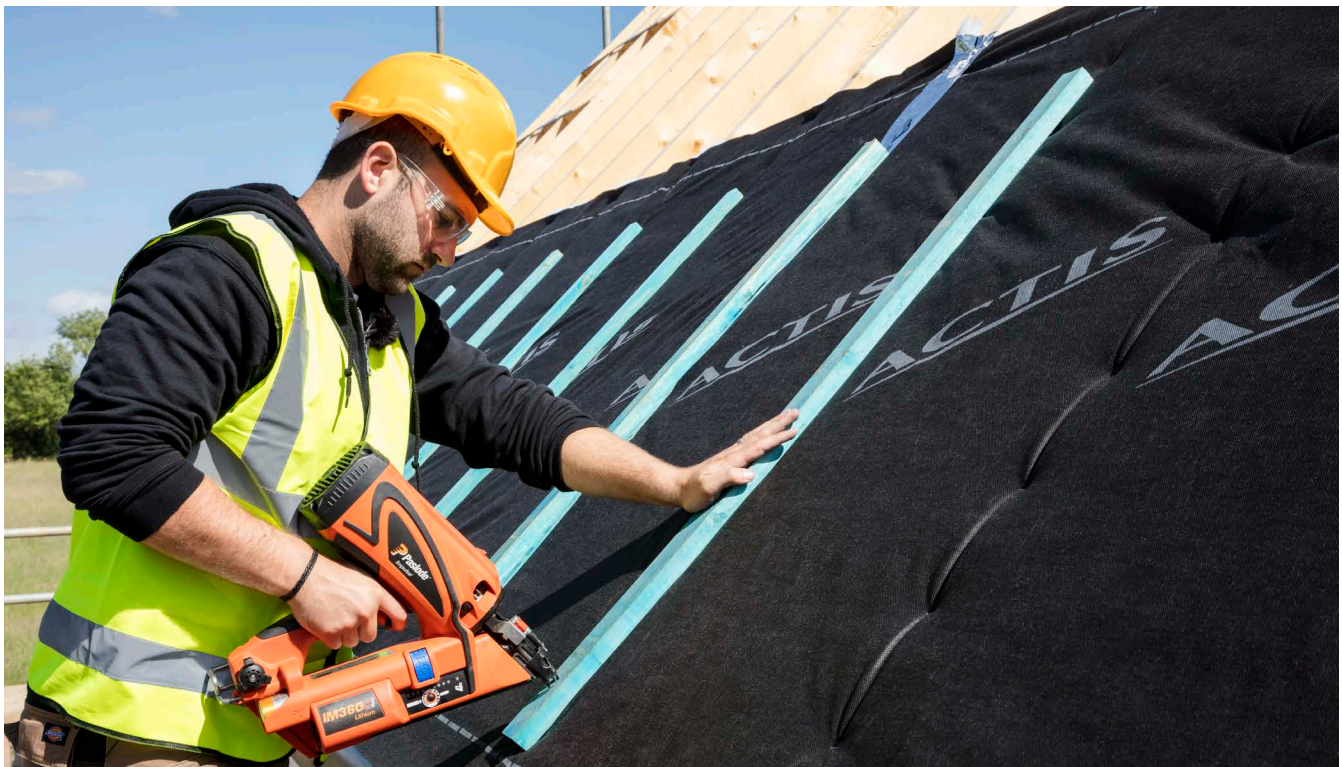
- 1** Remove product from the packaging. Starting at the bottom of the roof, open the roll and lay **BOOST[®] HYBRID ROOF** across the face of the timber rafters or boarded roof. **BOOST[®] HYBRID ROOF** must be installed with the perforated copper-coloured film facing downwards and the black watertight breather membrane facing upwards.



- 2** Fix to the structure every 100mm using clout-head nails or galvanised staples (minimum 14mm).



- 3** It is recommended that **BOOST[®] HYBRID ROOF** is installed pulled taut and with counter-battens to guarantee a clear water drainage path. Fix 25mm counter battens in line with rafters before tile battens. If installed onto a boarded roof install 38mm counter-battens before tile battens.



BOOST[®] HYBRID ROOF STEP BY STEP INSTALLATION

4

Overlap **BOOST[®] HYBRID ROOF** with the next layer of the product and seal using the built in self-adhesive tape. For this, peel-back the paper from the integral tape and bring the lap in contact with the lower layer.



5

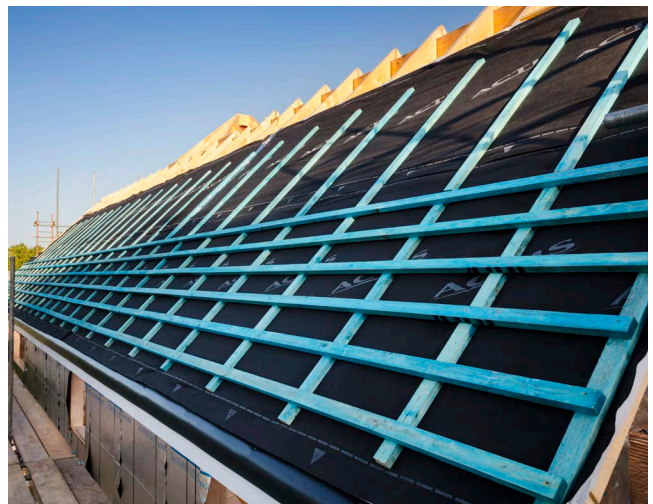
BOOST[®] HYBRID ROOF can be cut using an Actis cutter. Alternatively a pair of scissors or a knife can be used.

Vertical joints are to be lapped by 50mm-100mm and sealed with ACTIS Multidhesif tape which is recommended for the product. Alternatively the insulation layers (only) of the product can be cut back to create a flap for overlap onto the next role or joint. The flap is sealed with ACTIS Multidhesif tape.



6

Fix horizontal tile battens to size and gauge in accordance with BS5534 and tile manufacturers requirements (minimum 38 x 25mm battens).



SPECIFIC DETAILS

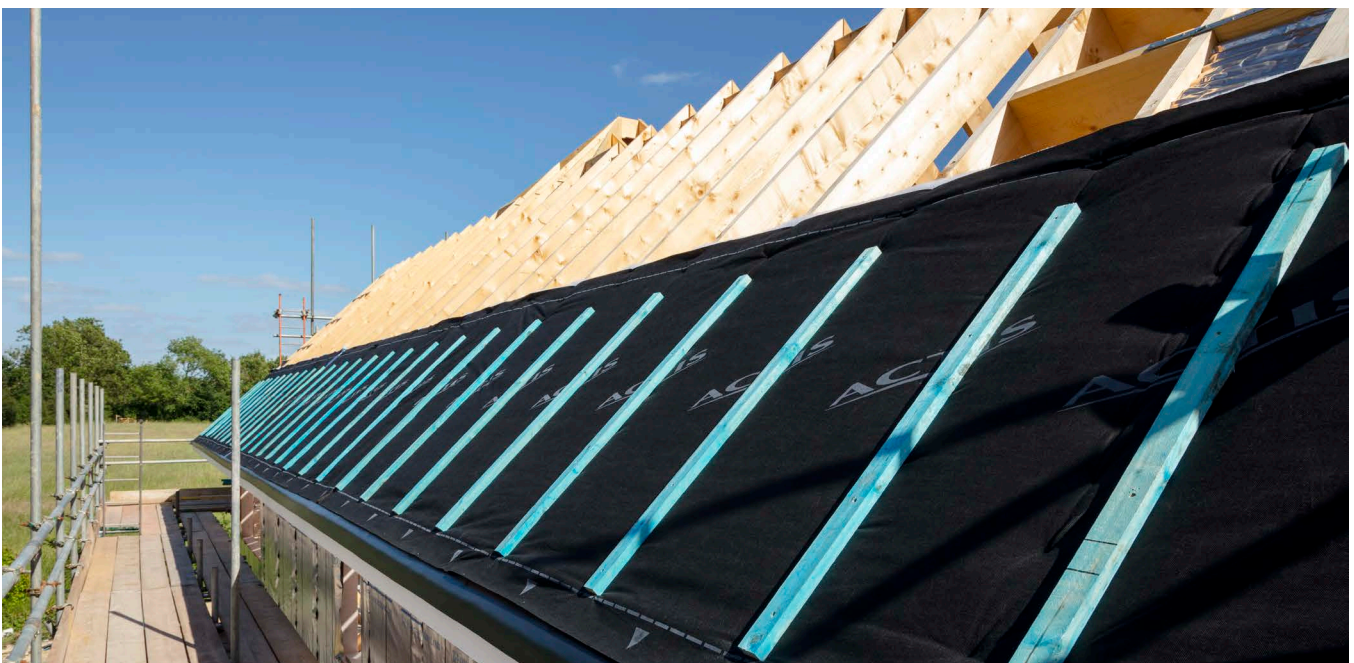
JUNCTION WITH THE GUTTER (EAVES DETAIL)

Overlap **BOOST[®] HYBRID ROOF** onto an eaves support tray sealing the joint to ensure good water drainage into the gutter:

- 1** Fit eaves support system so that it connects into the gutter. Install **BOOST[®] HYBRID ROOF** above rafters, so that the lap of the product drapes over the eaves support system.
- 2** Staple the **BOOST[®] HYBRID ROOF** to the rafters and seal it to the eaves support tray using the built in 100mm self-adhesive lap, in order to avoid air infiltration below the product and ensure water run-off.



- 3** Fix counter battens in line with rafters before tile battens and fit tiles.

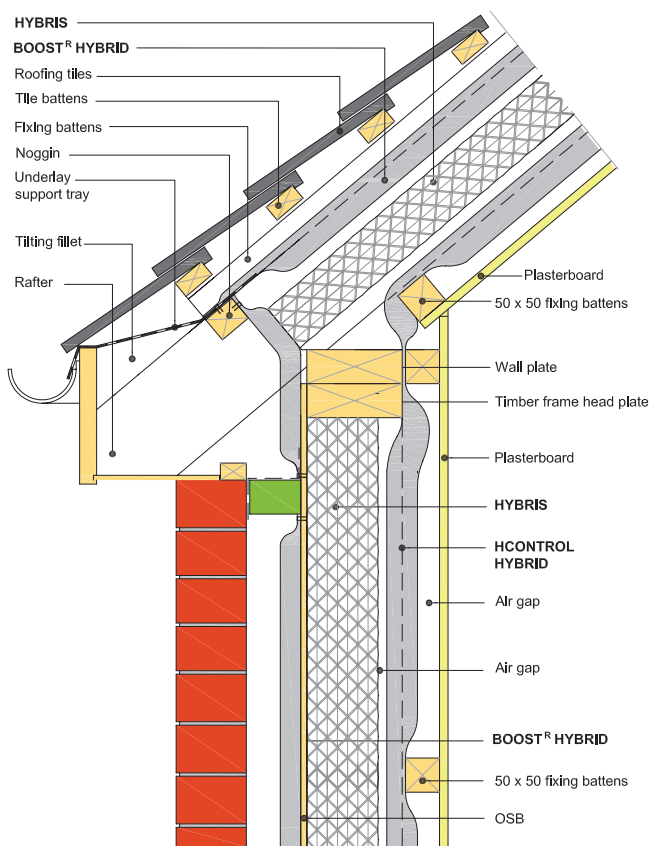


For further advice from ACTIS call the technical department on **01249 462 888**
or email **solutions@insulation-actis.com**

FURTHER TECHNICAL GUIDANCE

Continuity of insulation and airtightness

Building Regulations state that “Insulation should be reasonably continuous over the whole building envelope... Reduction in thermal performance can occur where the air barrier and the insulation layer are not continuous and the cavity between them is subject to air movement.” Attention to detail is therefore paramount from technical design through to construction stage, to address any shortcomings that may lead to the building not performing as predicted. Please see below typical timber frame wall build-up with HCONTROL HYBRID, HYBRIS insulation and BOOST[®] HYBRID, further construction details are available at www.insulation-actis.com.



HY11 - EAVES DETAILS

THERMAL BRIDGING

A thermal bridge is where a penetration through the insulation layer occurs, and heat is transferred through a non-insulating material, reducing thermal performance and potentially contributing to condensation and extra energy consumption. Thermal bridging can usually be reduced by ensuring:

- tightly fitting insulation layers without gaps
- perfectly sealed joints between adjacent insulation layers
- all exposed edges of multifoil insulation are folded under to stop air ingress
- continuous insulation and airtightness at construction junctions

Note: The type of thermal bridging that occurs at construction junctions is defined as linear thermal bridging (psi-value (Ψ)). Please contact Actis Technical Department for standard construction details and related psi-values.

DUCTING & SERVICE VOIDS

Reflective insulation products are preferably installed with air cavities. This creates an integrated service void, undisturbed by follow up trades, which favours the continuity of the insulation product within the building envelope and quality on-site. If penetration of product is necessary, this should not deteriorate the insulation and joints must be sealed with ACTIS tape to achieve good airtightness.

The installation requires careful detailing around doors and windows to achieve a satisfactory surface for finishing. The construction must be designed to accommodate the thickness of the dry lining, particularly at reveals, heads and sills.

Note: Continuity of insulation must not compromise compartmentation (fire safety). Please also see chapter 'Additional & Safety' information.

Condensation risk management

Condensation is most likely to occur when warm moisture laden air is able to pass from the warm to the cold side of the insulation and is then prevented from dissipating to the external ambience. Please consider the following to prevent condensation risk and also refer to Building Regulations Approved Document C and BS 5250:

VENTILATION

Excess of water vapour in the internal ambient air increases the risk of condensation. This can be avoided by adequately ventilating internal spaces using natural or mechanical ventilation. Furthermore, insulated building zones are to be maintained at constant internal ambient temperature of at least 12°C.

VAPOUR CONTROL LAYER

Vapour control layers on the warm side of construction build-ups are recommended because they limit the flow of warm air and water vapour through the structure to the cold side and provide airtightness.

It is recommended to install an independent and continuous vapour control layer with a significantly greater vapour resistance than any products installed beyond it. Joints must be well sealed with appropriate tape to guarantee airtightness.

BREATHER MEMBRANE

Construction build-ups are to be covered on the external with a membrane to prevent water ingress into the structure and to prevent the effect of wind loading onto wall/roof covering. Please follow good practice guidance as laid out in BS 5534 – Code of practice for slating and tiling.

High vapour resistant membranes can be used, but require ventilation on the warm side. This ventilation is not necessary when breather membranes are used as they allow for water vapour to disperse. In order to avoid a build-up of moisture in the batten space between breather membrane and roof covering, it is good practice to ensure adequate air movement through this void (under-tile ventilation). This will allow moist air to dissipate into the atmosphere.

Construction build-ups should be assessed in accordance with BS 5250 – Code of practice for control of condensation in buildings, in order to show that solutions are free from condensation risk. A condensation risk analysis in accordance with EN 13788 (Glaser method) is recommended for most build-ups.

Actis offer a free calculation service for U-value and Condensation Risk Analysis. Please contact the Technical Department.

ADDITIONAL & SAFETY INFORMATION

IMPORTANT: in addition to the specific recommendations given by ACTIS below, your ACTIS products should be installed and used in compliance with (1) good building practice, (2) the most recent editions of any applicable regulations or relevant guidance and (3) any British or European Standards relating to the installation and use of insulation/membrane products, particularly in relation to safety precautions.

FIRE PRECAUTIONS

ACTIS multifoil products are not fire rated and therefore have been classified as NPD (no performance declared). HYBRIS has been classified Euroclass F.

ACTIS insulation products must not be exposed to a direct heat source, sparks or a naked flame. ACTIS products will melt and shrink away from a heat source, but will burn in the presence of a naked flame.

Keep blow torches well away from ACTIS products, even when using a flame guard or other protective device, and make sure that hot debris and sparks do not make contact with the products.

CHIMNEYS, FLUES, HEAT EXCHANGERS AND OTHER SOURCES OF HEAT

Never use ACTIS insulation products to insulate a chimney flue, heat exchanger or any other heat source above 80°C. Use a Euroclass A1 non-combustible insulation in compliance with British or European Standards. ACTIS advise leaving a minimum gap of 200 mm between the insulation and chimneys, flues, heat exchangers and all other sources of heat above 80°C.

FIREPROOF FINISHES

As recommended by current regulatory guidance, ACTIS insulation products should always be covered with a fireproof lining board such as plasterboard (see, for example, the fire safety provisions contained in Approved Document B, which provides practical guidance on the fire safety requirements of the Building Regulations in England and Wales; or refer to the relevant provisions in Scotland and Northern Ireland, as amended from time to time).

COMPARTMENTATION

The spread of fire within a building can be restricted by sub-dividing it into segments separated from one another by walls and / or floors of fire resisting construction.

To ensure that compartment walls achieve the requisite levels of fire resistance, the insulation should not be carried over junctions with such walls (again, please refer to the fire safety provisions contained in Approved Document B noted above, or to any applicable provisions in Scotland and Northern Ireland, as amended from time to time).

Fire stops are used to ensure that fire resistance requirements are met – they are typically based on non-combustible materials. Cavity barriers are used within air cavities of cladding systems to prevent the spread of smoke and fire. Cavity barriers are usually required at eaves, around openings and at elements between compartments. Please follow Building Regulation guidance regarding positioning of cavity barriers.

For more detailed information about reaction to fire of ACTIS products and fire resistance of systems, please contact ACTIS Technical Department.

ELECTRICAL INSTALLATIONS

Follow requirements for electrical installations as set out in Building Regulations, NHBC and other relevant standards.

The use of down-lighters, recess lighting or any other source of localised heat (transformers, etc.) in direct contact with ACTIS insulation products is prohibited. However, if the use of recess lighting in conjunction with ACTIS insulation products is desired, specific precautions must be taken and ACTIS recommend the provision of a 'safety cavity' by creating a space between the insulation and the heat source in line with NHBC guidance. This 'safety cavity' guarantees the installation of e.g. down-lighters without the risk of contact with the insulation. The minimum height of this 'safety cavity' depends on the safety distance recommended by the down-light manufacturer.

In all cases advice should be sought from the relevant Building Control officer who will give guidance on a case by case basis.

SAFETY

Security precautions against e.g. falling from height are necessary.

During installation extra care should be taken when working in wet conditions due to the increased risk of slipping.

ACTIS products are lightweight and non-loadbearing. They will resist normal loads associated with installation and use, although cannot be walked on.

Check individual company policy regarding the distribution and type of PPE required e.g. Hi-Viz tops, hard hats, safety footwear, gloves etc.

Remember that ACTIS products are highly reflective. Where the products are being installed in bright or sunny weather conditions, appropriate eyewear should be worn (such as sunglasses conforming to the most stringent requirements of BS EN 172, as amended from time to time) and protect against sunburn.

All ACTIS products have safety information data sheets (COSHH) available on request. All ACTIS products are free from asbestos or irritant fibres and are CFC and HCFC free.

STORAGE

Products should be stored in clean, dry conditions, not exposed to UV-radiation and sunlight and in such a way that dirt and dust cannot adhere to the product surfaces.

Indoor storage of product is recommended. The products must be protected from being dropped or crushed by objects.

They must not be exposed to open flame or other ignition sources and must be stored away from flammable material such as solvents. Avoid all contact between ACTIS Hybrid products and caustic products.

ADDITIONAL INFORMATION

U-VALUE SIMULATOR

Discover a unique tool to get a quick simulation of your project by visiting hybrid.insulation-actis.com

VISIT OUR WEBSITE

Please visit www.insulation-actis.com for more details.

FOLLOW US



LinkedIn page **ACTIS Insulation**



Watch installation videos on **ACTIS Insulation UK**

ACTIS INSULATION LTD.

Unit 1 Cornbrash Park - Bumpers Way
Bumpers Farm Industrial Estate
Chippenham - Wiltshire - SN14 6RA

T: +44 (0) 1249 462 888

F: +44 (0) 1249 446 345

E: solutions@insulation-actis.com

ACTIS

TOMORROW'S INSULATION TODAY

